



menARD

**Key soil investigation,
improvement and remediation
provider**

Menard develops foundation solutions based on ground improvement and reinforcement technologies that eliminate the need for the deep foundations traditionally used to support surface structures. The Group operates throughout the infrastructure life cycle, offering expertise in soil investigation and remediation through its ConeTec and Remea brands.

Revenue¹

€359m

Employees

1,470

Order Intake

- East Port Said Extension, Egypt
- Smelting Plant in Toledo, Ohio United States
- Aicherpark Shopping Centre, Germany
- Central Avenue Highway, New Jersey, United States
- Prabuty-Szymankowo Railway Line, Poland

"Seasons" complex, Canada



1 - Managed revenue

“Digitalisation is a central focus of our approach”

What is your take on your business activity in 2018?

Our 2018 activity is good, overall. In Australia, for example, we returned to moderate profitability. We expanded in Asia and Latin America, did well in Europe and maintained good profitability in the Middle East. We had difficulties in North America – the United States and Canada – in 2018, but we are restructuring there and the results of our efforts will be fully felt in 2019. Meanwhile, we continued the integration of ConeTec, acquired in 2017, which operates in Canada, the United States and Latin America. ConeTec outperformed its objectives and in 2019 we will be expanding its activities to other geographical areas.

What is the main focus of your expansion strategy?

Our priority is to continue to build on our local roots to expand our market share in areas where we are already operating. We are therefore reviewing our markets, our services and the geographical areas in which we work. In North America, for example, we are putting together a less centralised organisational structure made up of entities that work autonomously and can therefore handle projects of reasonable size simply and efficiently.

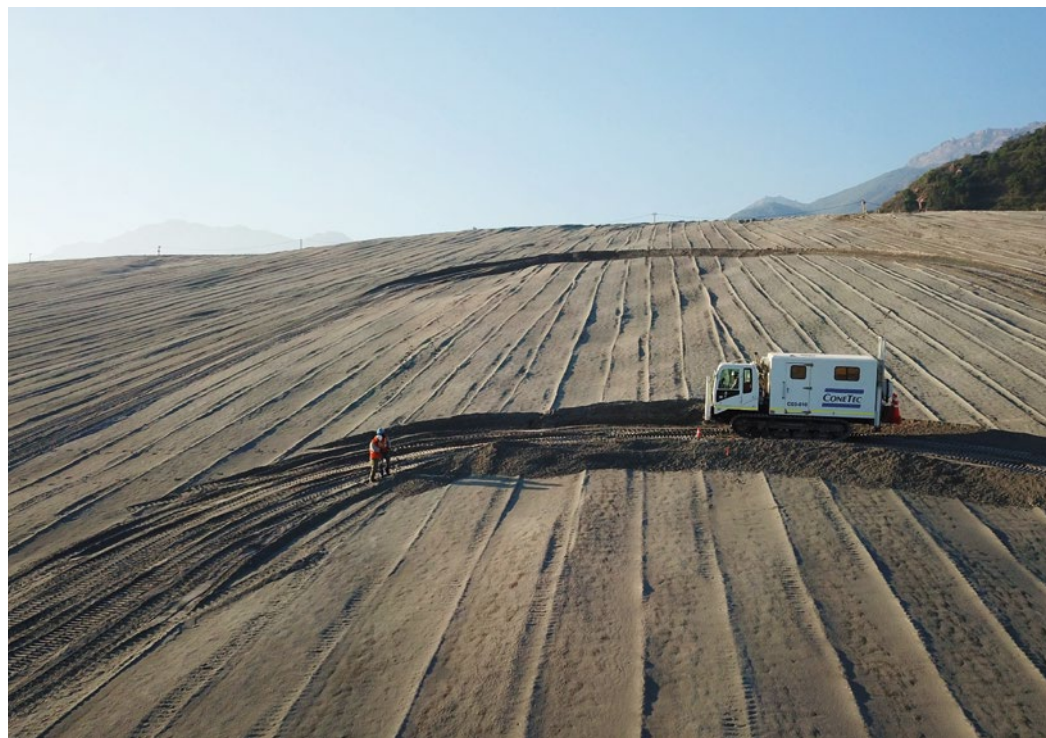


What are your operational priorities in 2019?

Digitalisation is a central focus of our approach. We have major programmes involving the introduction of tools that enable us to dialogue with our worksites, send execution plans directly to machines and collect production data. This boosts our responsiveness and the quality of our work. In 2019 we also plan to better capitalise on the technical solutions used on our various projects. We have therefore set up support teams to help us better share techniques and expertise and make them a permanent feature of our worksites.

Chile

Geotechnical investigation at a mine tailings dam



The teams at ConeTec carried out a geotechnical site investigation of a large mine tailings dam in Chile. They carried out seismic piezocone penetration testing (SCPTu) and installed push-in VW piezometers to depths of up to 100 metres. The primary purpose of the investigation is to monitor the stability of the dam. The goal was to safely provide high quality geotechnical information to support engineering decisions.

Penetration testing
to depths of up to

100

metres

Monaco

Portier Cove reclamation project

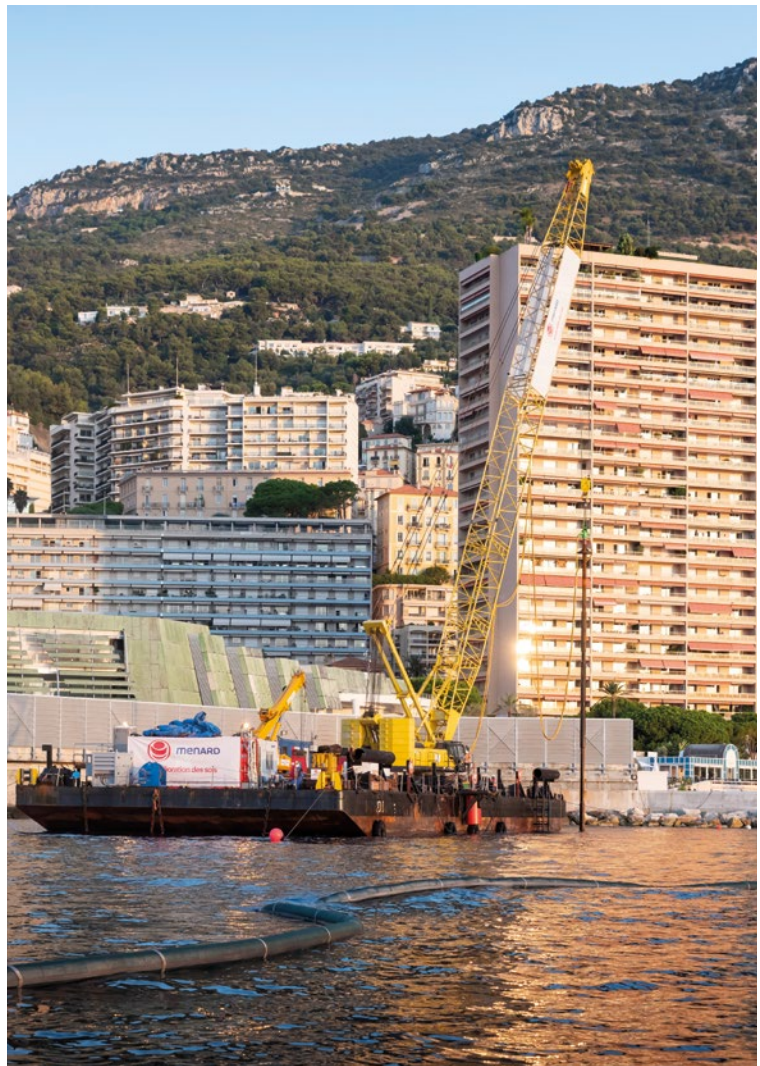
The outsized Portier Cove urban extension project will reclaim six hectares of land from the sea to accommodate 60,000 sq. metres of residential space as well as public facilities. To meet the technical and environmental challenges of this colossal undertaking, Menard employed three ground improvement techniques: vibrocompaction; “bottom feed” stone columns; and “top feed” stone columns (more than 5,000 linear metres installed).

6 ha

of land from the sea

60,000

sq. metres of
residential space



[Find out more](#)



United States **Glasshouse real estate development**

In Pittsburgh, Menard carried out ground improvement at a former glass factory to support a multi-use real estate development comprising more than 300 homes, offices, shops, an underground car park and a swimming pool. To improve the historic fills, the Group installed stone columns. This economical and quick-to-install solution strengthened the soil's load-bearing capacity and ensures minimal settlement.

 [Find out more](#)

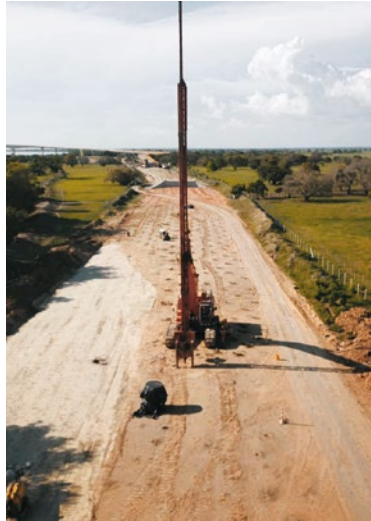


Indonesia New Yogyakarta International Airport

Menard took part in the consolidation of the future runways at the new Yogyakarta international airport, densifying some 400,000 sq. metres of soil by means of dynamic compaction.

Colombia Extension of the Yatí-Bodega Interchange

Menard's teams participated in the construction of the Roncador Bridge, the longest in Colombia, deploying a ground improvement solution using vertical drains (330,000 linear metres).



[▶ Watch the video](#)



Australia Sydney Metro

Menard carried out major geotechnical work on the future Waterloo and Barangaroo stations. The work included jet grouting, rock injection, and installation of around 1,000 anchors and anchor bolts. The project was a major factor in the award of the Melbourne metro contract.

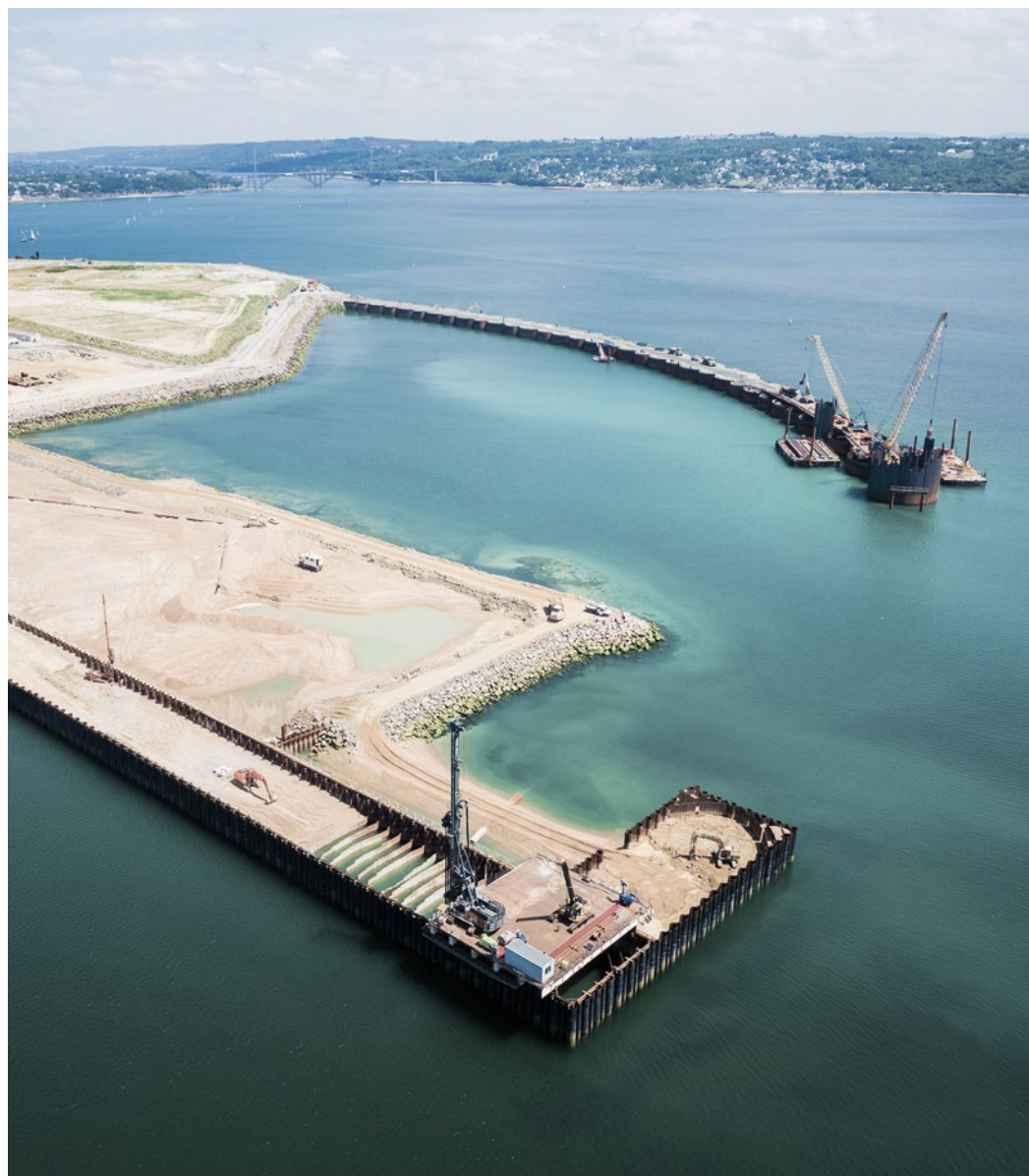
[🌐 Find out more](#)

France

Port of Brest Extension

[Find out more](#)

Menard worked on the extension of the commercial port in Brest as part of the construction of a 400 metre quay and a storage area for heavy loads. Three techniques – soil mixing, jet grouting, and vertical drains – were employed to reinforce and consolidate the existing silt and avoid the need for dredging. The solution is technically effective and also protects the environment.



France

Rehabilitation of a former pesticide factory

Remea, the Menard brand specialising in soil remediation, carried out rehabilitation work on a brownfield site in the Gard department to remove pollutants from the soil and water. Remea excavated some 70,000 cu. metres of soil and treated it at the bottom of the excavation. Following on-site analysis, more than 26,000 cu. metres of polluted soil were removed and disposed of. The remaining soil was backfilled in strict compliance with compaction and load-bearing capacity requirements.

70,000

cu. metres of soil excavated



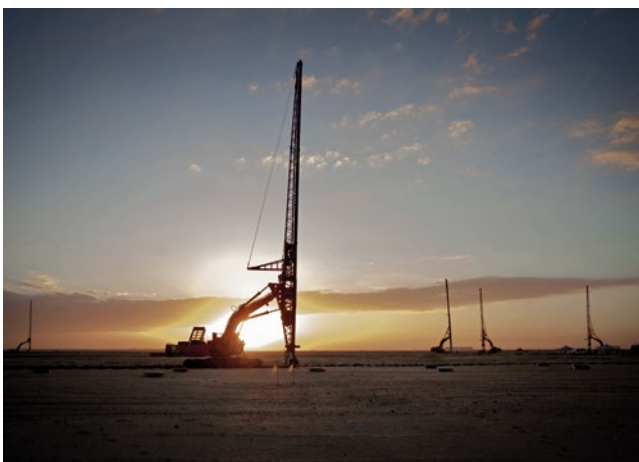


Poland **Warsaw-Lublin** **railway line**

To improve the ground for the future railway lines, Menard's teams installed more than 20,000 controlled modulus columns (CMC), over more than 140,000 linear metres.

Scotland **Lidl supermarket** **logistics centre**

Vibro Menard carried out ground improvement beneath a Lidl logistics centre built over a backfilled quarry by installing controlled modulus columns to a depth of up to 15 metres.



Egypt **East Port Said** **Industrial Zone,** **Port Said**

Following successful completion of the first phase carried out in 2016, Menard won the contract for a second phase of ground improvement works at the industrial terminal site involving installation of 64 million linear metres of prefabricated vertical drains.

Photo credits:

Phototèque Menard,

Page 03: ©Cédric Helsly for Menard
- Bouygues TP

Page 06: ©Yves Chanoit for Menard.

Main Contractor: Région Bretagne

Engineer: Egis

Page 07: ©Cédric Helsly for Remea

Design and layout:

Abmo

Soletanche Freyssinet is world leader in soil, structural and nuclear engineering. The Group brings together an unparalleled array of construction and engineering expertise and brands. Soletanche Bachy, Menard, Terre Armée, Freyssinet, Nuvia and Sixense provide technical excellence to ensure structure performance and sustainability. The Group supports the expansion of its brands by providing the resources to extend their worldwide networks and broaden their technology portfolios.

www.soletanchefreyssinet.com



www.menard-group.com

 [menard-group](#)

 [Menard](#)

